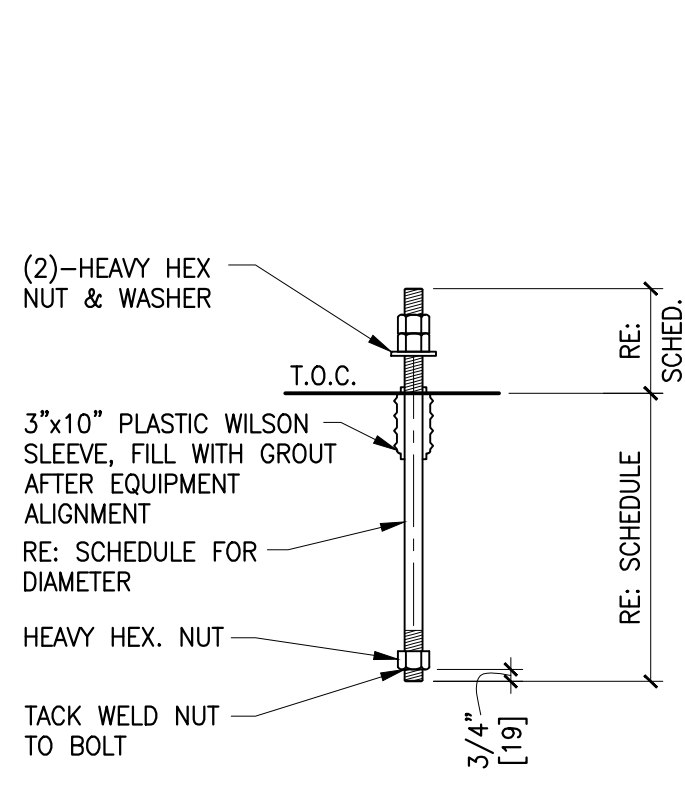


ANCHOR BOLT SCHEDULE									
LOCATION	MARK NO.	TYPE	TOTAL QUANTITY	LENGTH L	DIAMETER D	THREAD T	PROJECTION	REMARKS	WILSON SLEEVE
INTAKE AIR FRAME	AB-1	TYPE 1	32	3'-0" [900]	7/8" [M24]	6" [150]	6" [150]	2, 4	NO
GEN. VENT DUCT FRAME	AB-2	TYPE 1	16	3'-0" [900]	7/8" [M24]	6" [150]	6" [150]	2, 4	NO
STACK	AB-3	TYPE 2	12	5'-4" [1600]	2" [50]	1'-0" [300]	2'-0" [600]	2, 3, 5	YES
AUXILIARY SKID	AB-4	TYPE 1	4	2'-0" [600]	3/4" [19]	6" [150]	6" [150]	2	NO
LUBE OIL TANK SKID	AB-5	TYPE 1	4	1'-8" [508]	5/8" [16]	6" [150]	6" [150]	2	NO
TURBINE BASE	AB-6	TYPE 1	10	3'-2" [950]	1 1/4" [M30]	6" [150]	6" [150]	1	NO
GENERATOR BASE	AB-7	TYPE 3	12	3'-8" [1100]	1 1/2" [M36]	10" [250]	1'-0" [300]	1, 3, 6	YES
PLENUM BASE	AB-8	TYPE 1	4	2'-6" [750]	1" [25]	6" [150]	6" [150]	1	NO

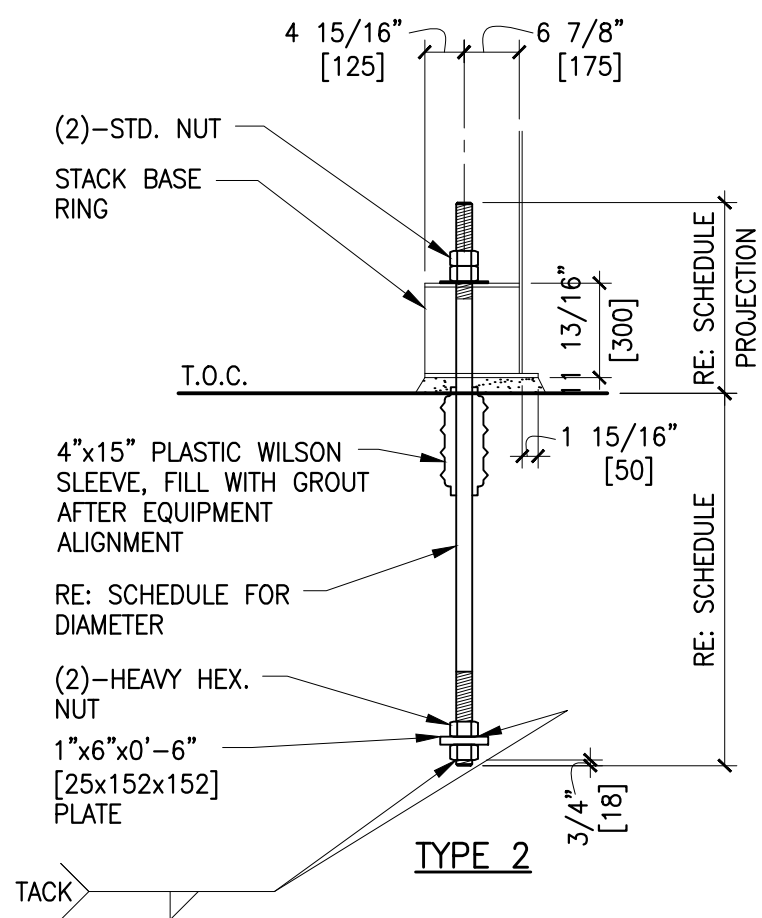
- ASTM A193-B7 WITH A MINIMUM YIELD STRENGTH OF 105,000 PSI (723.9 MPA).
- F1554 GRADE 36 ANCHOR BOLTS WITH A MINIMUM YIELD STRENGTH OF 36,000 PSI (248.1 MPA).
- PROVIDE DOUBLE HEX NUTS AT TOP OF BOLTS.
- PROVIDE LEVELING NUT.
- TIGHTENING TORQUE = 800 FT. LBS.
- FOUNDATION BOLT PRE-LOAD = 3,300 LBS [1500 KGS].

## ANCHOR BOLT SCHEDULE AND DIAGRAMS

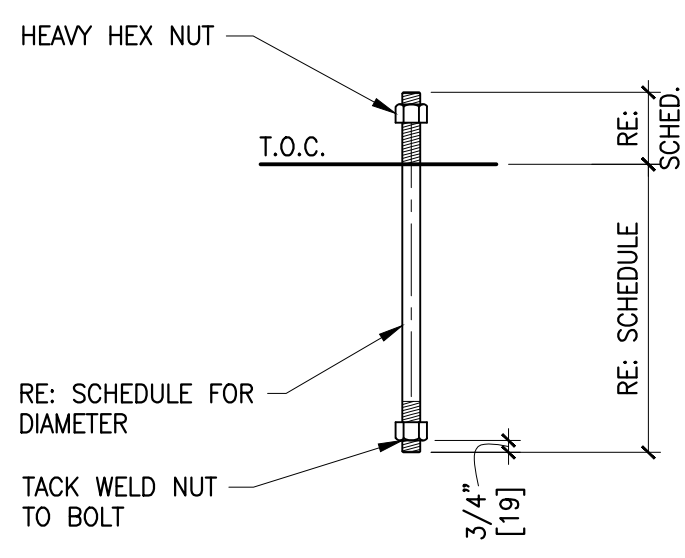
N.T.S.



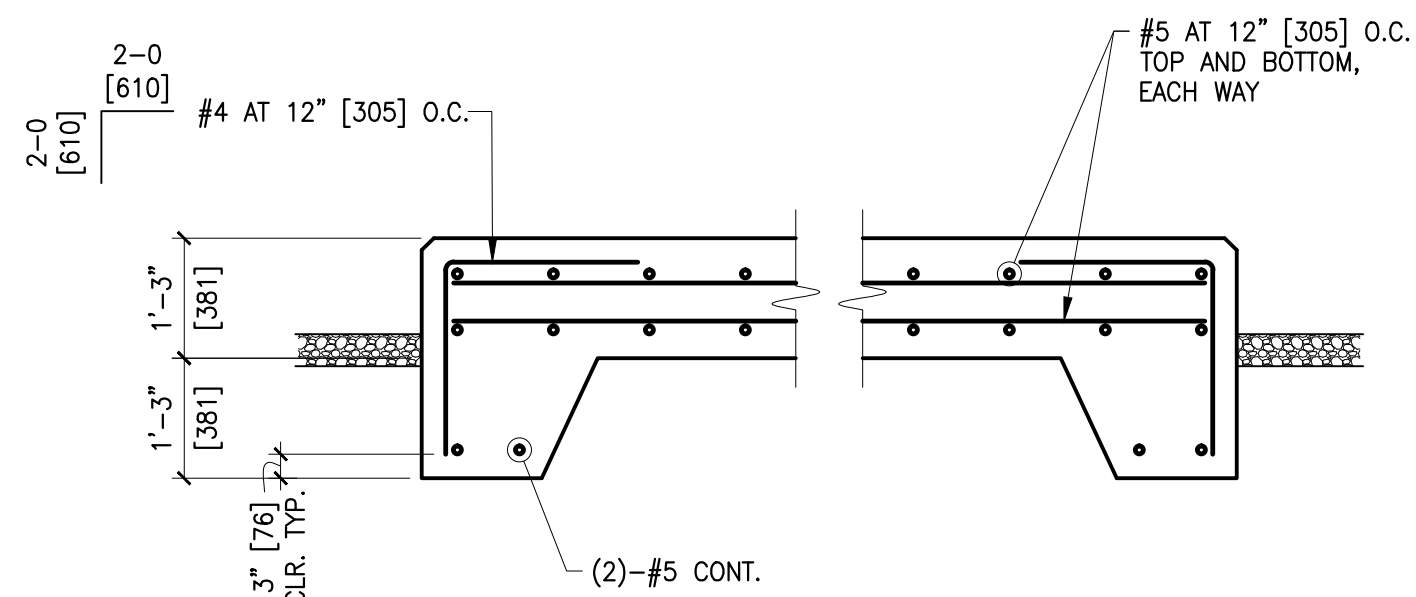
TYPE 3



TYPE 2

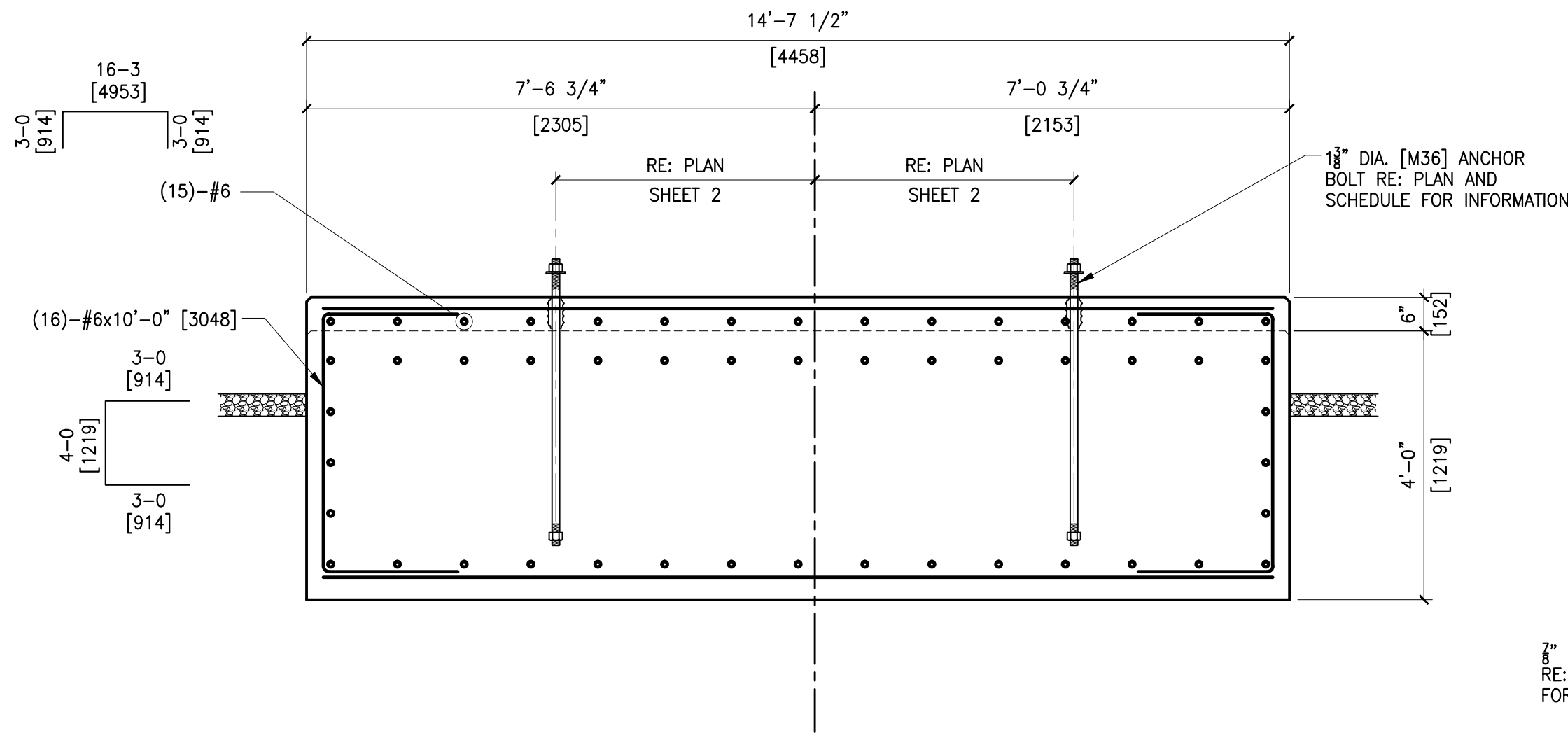


TYPE 1



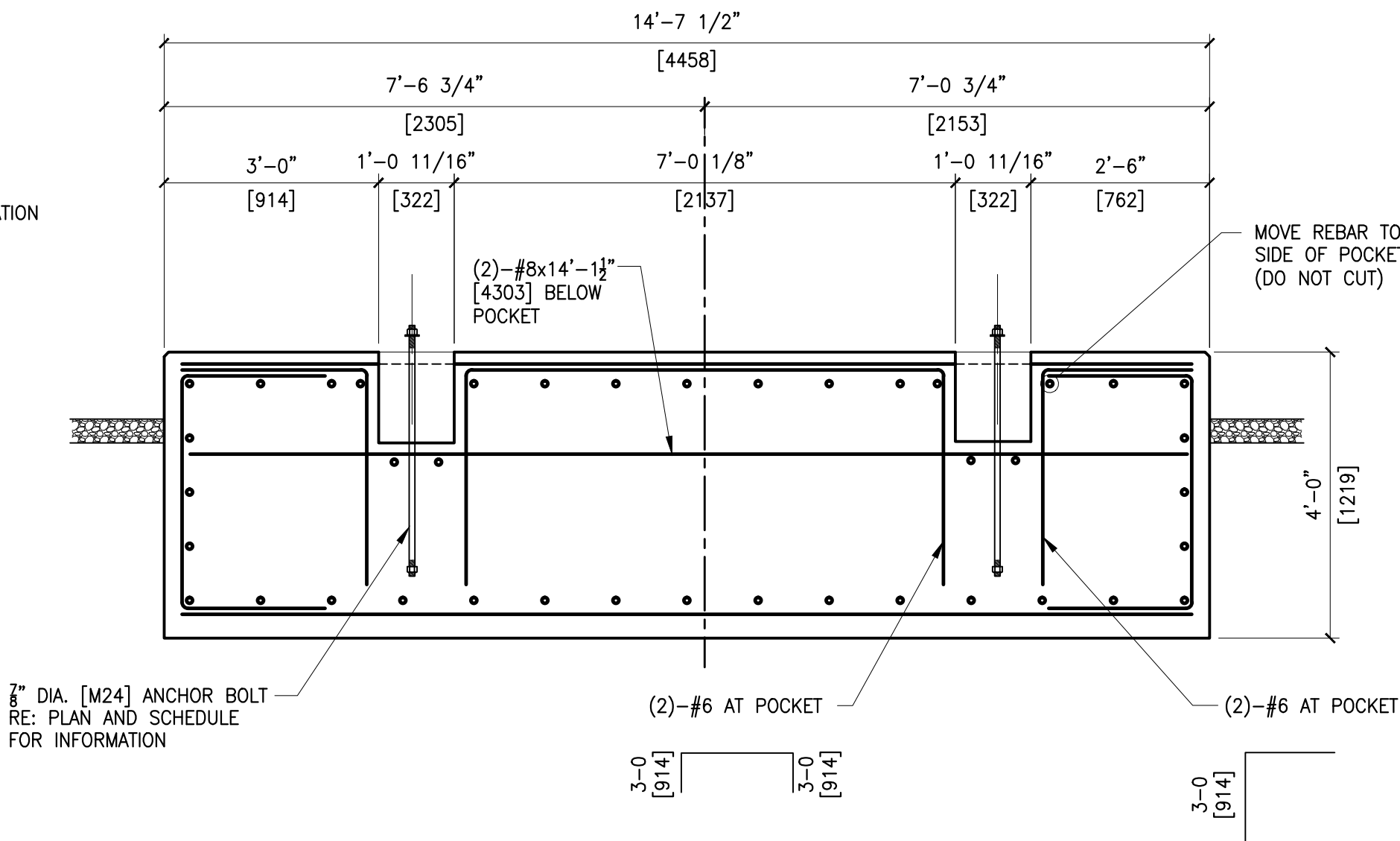
## D SECTION

1/2" = 1'-0"



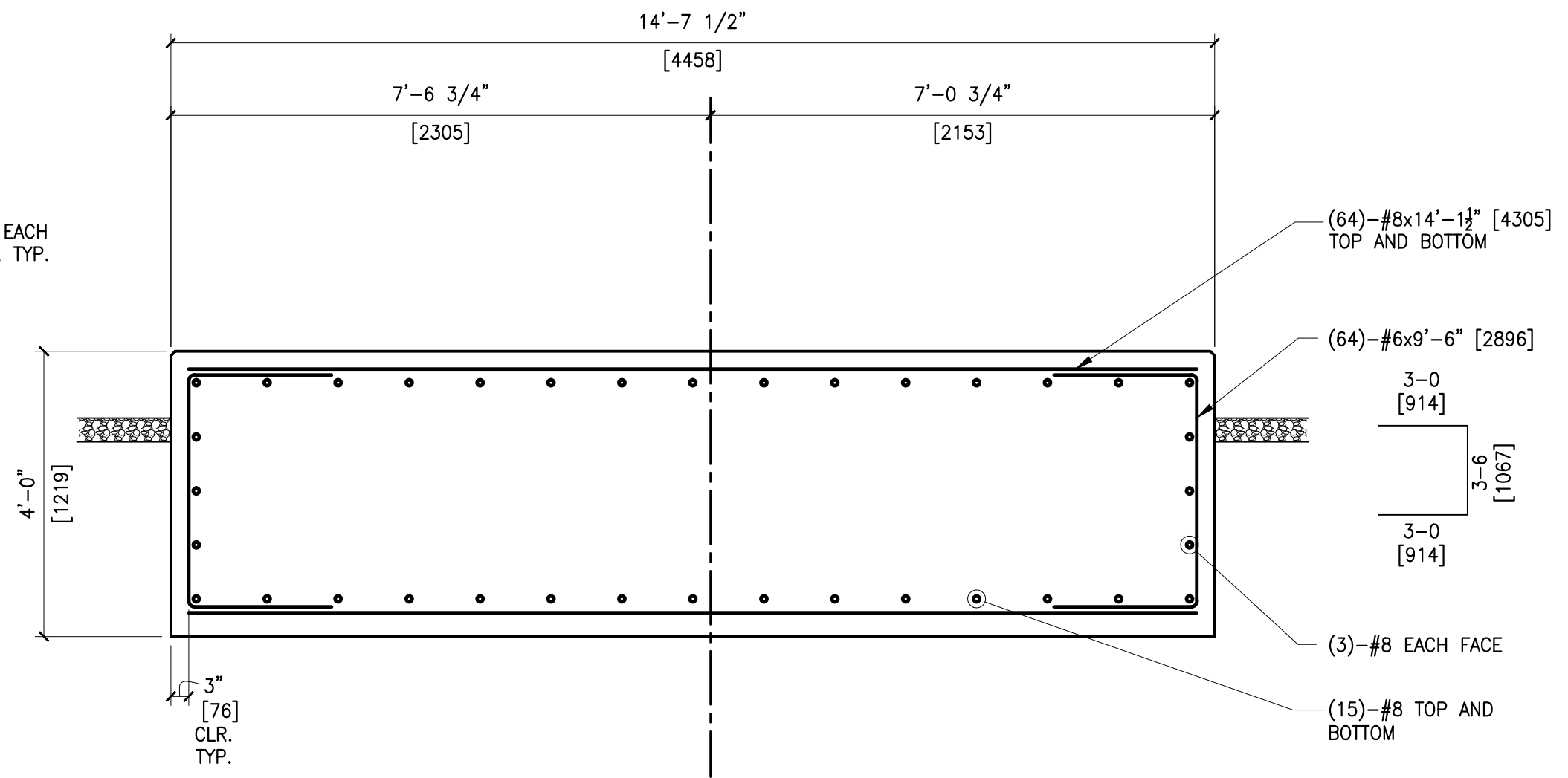
## C SECTION AT GENERATOR PEDESTAL

1/2" = 1'-0"



## B SECTION AT POCKET

1/2" = 1'-0"



## A SECTION – TYPICAL

1/2" = 1'-0"



WALLACE ENGINEERING  
STRUCTURAL CONSULTANTS  
200 EAST BRADY STREET  
TULSA, OKLAHOMA 74103-2012  
918 584-3858  
FAX 918 584-8889



EDGInternational, Inc.  
Certificate of Authorization No: 4913  
Renewal Date: 6/30/2019



DERWICK ASSOCIATES S.A.

© COPYRIGHT, 2008, ProEnergy SERVICES ALL RIGHTS, RESERVED.  
THIS DRAWING IS THE PROPRIETARY AND/OR CONFIDENTIAL  
PROPERTY OF ProEnergy SERVICES AND IS LOANED IN  
STRICT CONFIDENCE WITH THE UNDERSTANDING THAT IT WILL  
NOT BE REPRODUCED NOR USED FOR ANY PURPOSE EXCEPT  
THAT FOR WHICH IT IS LOANED. IT SHALL BE IMMEDIATELY  
RETURNED ON DEMAND, AND IS SUBJECT TO ALL OTHER TERMS  
AND CONDITIONS OF ANY WRITTEN AGREEMENT OR PURCHASE  
ORDER WHICH INCORPORATES OR RELATES TO THIS DRAWING.

NO.	DATE	BY	APP'D	DESCRIPTION
0	04/10/10	RKH	ML	ISSUE FOR REVIEW

NO.	DATE	BY	APP'D	DESCRIPTION
0	04/10/10	RKH	ML	ISSUE FOR REVIEW

DRAWN	RKH	04/10/10
CHECK	ML	04/10/10
DESIGN	ML	04/10/10
ENGINEER		
PROJ MGR		
QA MGR		
SCALE	AS NOTED	SIZE D



907 S DETROIT  
SUITE 1140  
TULSA, OKLAHOMA 74120  
OFFICE 680-829-5100  
FAX 918-270-2939  
www.proenergyservices.com

DISCLAIMER:  
THIS DRAWING WAS PREPARED FOR USE ON A SPECIFIC SITE AT GUARENAS,  
VENEZUELA, CONTEMPORANEOUSLY WITH ITS ISSUE DATE AND IS NOT SUITABLE FOR  
USE ON A DIFFERENT PROJECT SITE OR AT A LATER TIME. REUSE OF THIS DRAWING  
OTHER THAN ACCORDING TO ITS INTENDED PURPOSE IS AT THE PROJECT OWNER'S  
OWN RISK. MODIFICATION OF THE DRAWING IS PROHIBITED WITHOUT THE PRIOR WRITTEN  
CONSENT OF WALLACE ENGINEERING-STRUCTURAL CONSULTANTS, INC. AND EDG  
INTERNATIONAL, INC. IS AT THE PROJECT OWNER'S OWN RISK. USE OF THIS DRAWING  
FOR REFERENCE OR EXAMPLE ON ANOTHER PROJECT REQUIRES THE SERVICES OF  
PROPERLY LICENSED ARCHITECTS AND ENGINEERS. REPRODUCTION OF THIS DRAWING  
FOR REUSE ON ANOTHER PROJECT IS NOT AUTHORIZED, IS AT THE PROJECT OWNER'S  
RISK AND MAY BE CONTRARY TO THE LAW.

## ProEnergy EPC Services, LLC

FOUNDATION SECTIONS AND DETAILS  
TURBINE GENERATOR LM 2500 - UNITS 200/300  
GUARENAS 1 POWER PLANT

GUARENAS	DWG NO.	SH NO.	REV
JOB NO. 0920	20-003	4	0